



The AVA logo is displayed in white on a purple rounded square background in the top left corner.


Summary Brochure | 2020


# Data Financial introduces end-to-end hybrid cloud video security solution


# Your video security can be smart, agile, and easy to use.


- 


Achieve true AI-powered, proactive security
- 


Get started in minutes, no matter the deployment size
- 

Stay protected from cyberattacks and updated through the cloud at all times
- 

Power your operators to investigate smarter and faster
- 

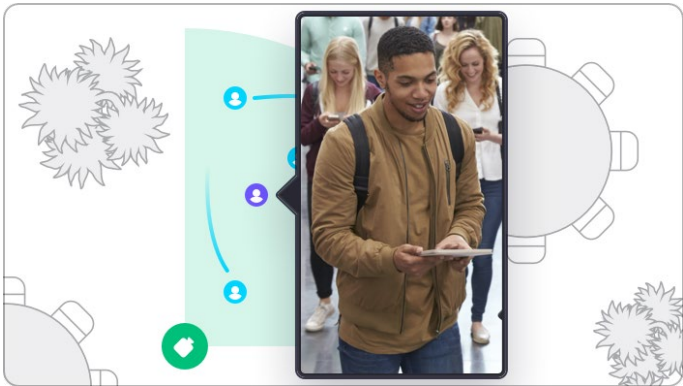
Enhance your business and operational insights
- 

Get analytics from all your cameras, all the time, instantly
- 

Leverage the power of Ava Cloud Cameras with built-in analytics and on-device storage
- 

Secure web and app access from anywhere in the world

## Why Ava?



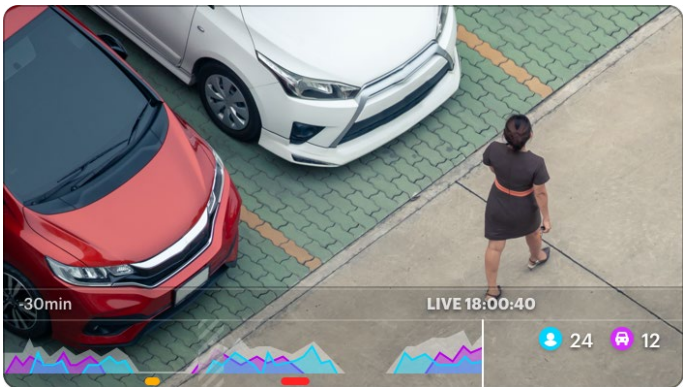
### Map view with Smart Presence™

Ava Aware allows operators to add maps of all your locations to gain more situational awareness and insights. Each map can be configured and includes camera views, alarm views, as well as the ability to track people and objects as they move on your premises.



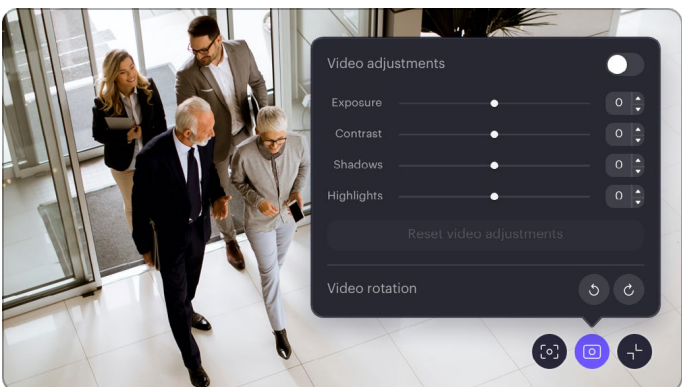
### Video view with Spotlight

Powered by deep learning, Aware uses Spotlight to change video streams dynamically to bring only the relevant feeds to the attention of the operator. Real-time alerts and notifications show up on the video wall to describe the incident, the time and place it occurred.



### Timeline with Smart Presence™

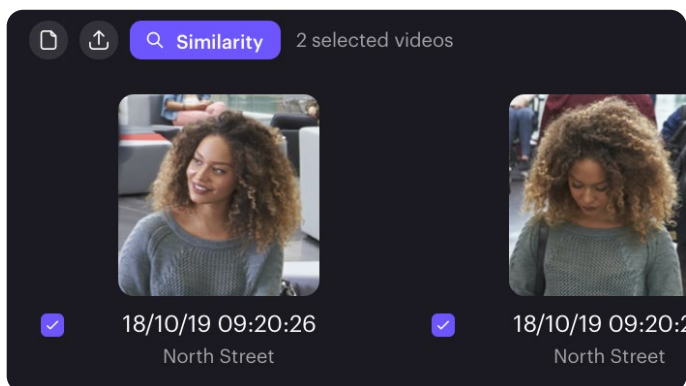
The rich playback timeline in Aware's video view provides thumbnail-based browsing of video and highlights people, vehicles, and overall motion separately. Your operators gain a better, clearer understanding of different events captured by the camera.



### Simple configuration

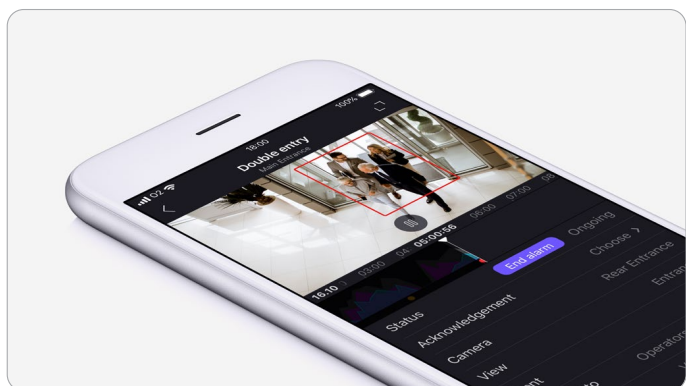
Aware makes it easy to add cameras and maintain simple, scalable management with group configuration policies. You also get access to detailed camera information, activity logs, and advanced video adjustments in a single pane with focused user experience and automation.





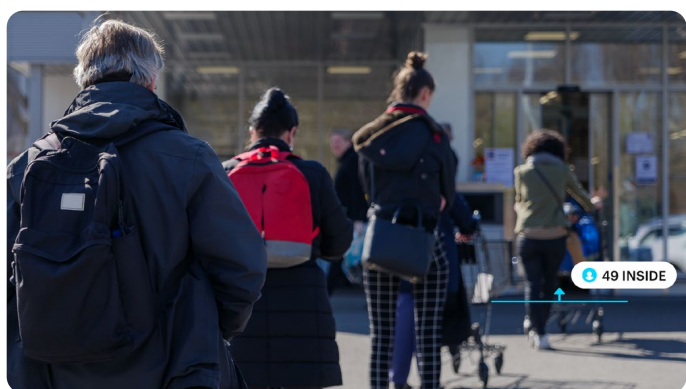
## Smart Search™

Search by event and similarity and perform appearance and image detection powered by machine learning capabilities to comb through countless hours of video, throughout your entire implementation. Reduce forensic investigation time and gain more efficiency and accuracy with the same number of operators.



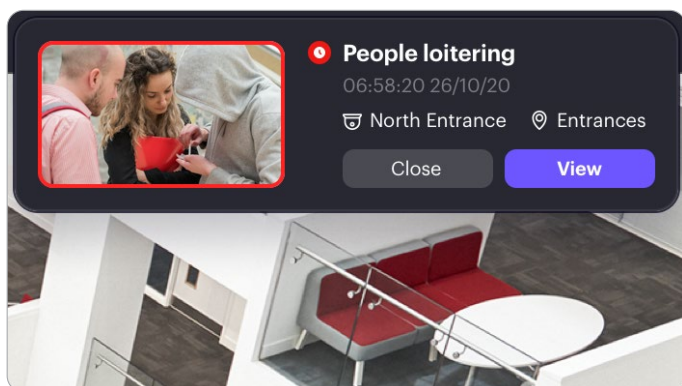
## Mobile app (Android, iOS)

With the Ava Aware Android and iOS apps, we offer users a set of features that mirrors the Aware web client, from seeing and managing alarms, viewing video live, or playback to manual recording. Users will experience a natural, smooth transition from web to mobile and vice-versa.



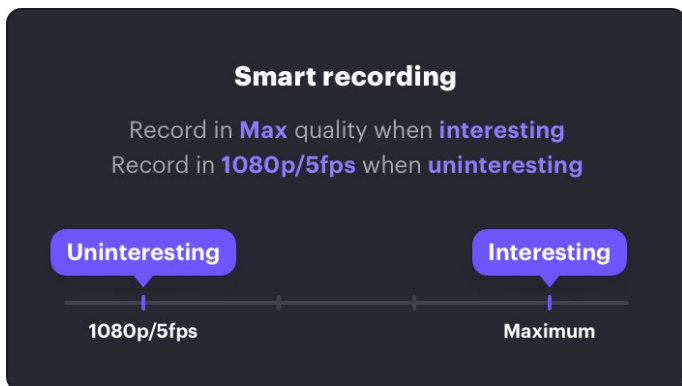
## Occupancy counting

With occupancy counting, security operators and administrators can monitor large facilities to keep a rolling total of the current occupancy of people and vehicles of defined locations. Additionally, in-view area counting can be used to monitor specific areas where people are congregating.



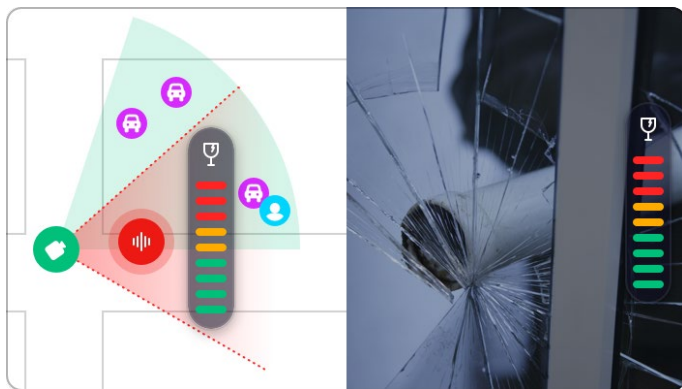
## Alerts and notifications in real-time

Use rules-based templates to define scenarios where you want to be notified when specific events occur, such as loitering, line crossing, fire exit access, and more. Ava leverages advanced object identification to monitor and detect unusual events and behaviors and sends alerts and notifications in real-time.



## Smart Recording™

Smart Recording™ switches the resolution stream for all your camera recordings. It automatically records with maximum resolution when people and vehicles are present or interesting events occur, and changes to as low as 360p or no recording at all when the activity disappears to save storage space.



## On-camera analytics

Ava's cloud-managed Dome and 360 security cameras integrate intelligence via image recognition, machine learning, and directional acoustic sensors. Each camera also identifies specific sound patterns, like screaming, gunshots, breaking glass, or loud noises, to determine the type of sound and direction.



### Always on security

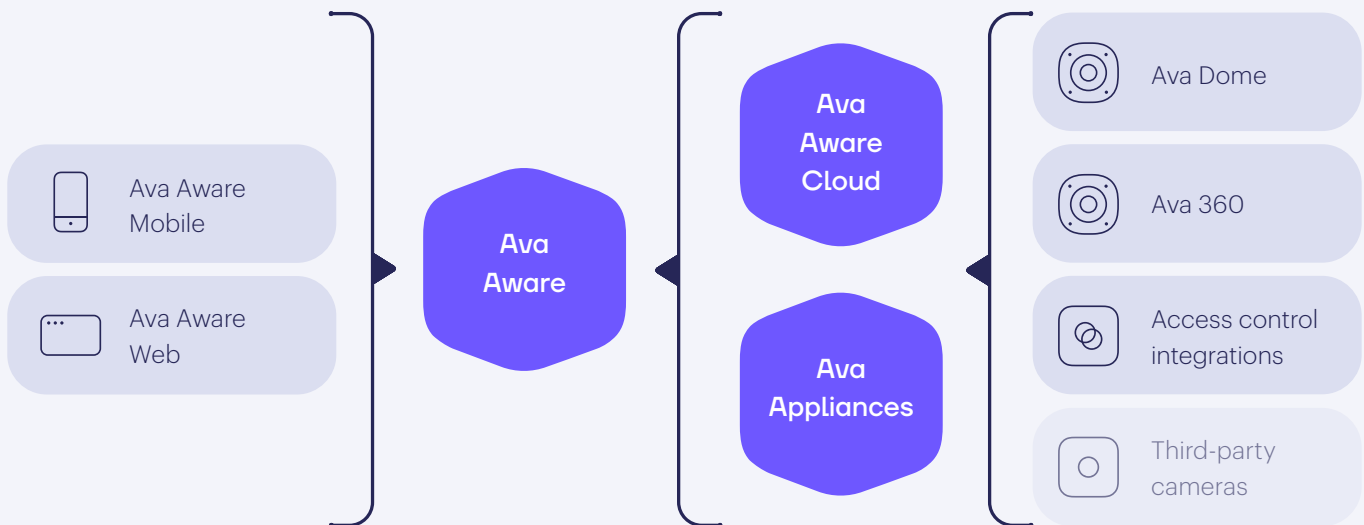
Our solution is cyber-hardened out of the box to help you stay protected against the vulnerabilities of our current connected world. We use end-to-end encryption, factory-installed certificates on a trusted module, and we perform automatic software & firmware updates, with performance checks through the cloud.



### Access control integrations

Security administrators get a complete picture of access control events, as well as alerts and notification based on specific events. Watch detailed accounts of alarms associated to access control points, review access and exit attempts in real-time, and even grant access to authorized staff instantly from the system.

## Your end-to-end video security solution awaits



### Simple and flexible licensing

With a simple licensing model, Ava always includes services and software upgrades. You no longer have to worry about integration charges, operator charges, API fees, or the complexity between small, medium, large, and enterprise services.