

POSX
POINT OF SALE SIMPLIFIED

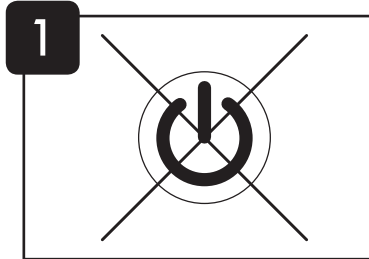
www.pos-x.com | 360.738.8433 | support@pos-x.com

QUICKSTART GUIDE

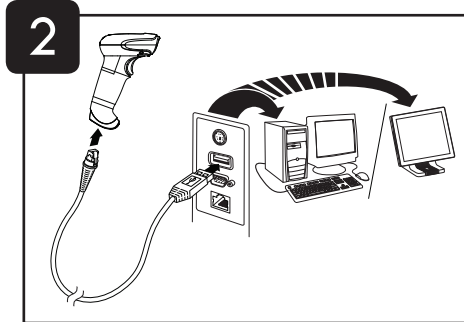
EVO LASER BARCODE SCANNER

document version 1.0

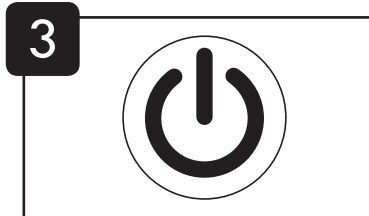
GETTING STARTED



Turn the computer **OFF**.

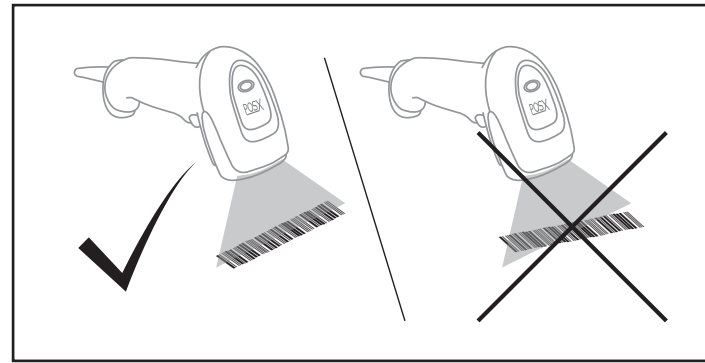


Connect the scanner USB plug into a USB port on the computer.



Turn the computer **ON**.

READING TECHNIQUE



SCANNER SETTINGS

RESET DEFAULTS

Scan the code below to reset all scanner settings to the factory defaults.



SCAN MODE

TRIGGER MODE: Scan the code below to activate the manual mode. In this mode, the laser will only activate when the trigger is pulled.



CONTINUOUS BLINK: Scan the codes below to activate the continuous blink mode. In this mode, the laser will toggle ON and OFF, and scanning will occur any time the laser is ON.



SUFFIXES

Scan the appropriate barcode below to add or remove a carriage return, line feed, or tab, after each scan.

Carriage Return ON



Carriage Return OFF



Line Feed ON



Line Feed OFF



Tab ON



Tab OFF



UPC/EAN FORMATTING

Scan the appropriate code below to convert between UPC-A and EAN-13 scan modes.

Convert UPC-A to EAN-13



Don't Convert EAN-13 to UPC-A



Scan the appropriate code below to select if a leading zero (0) will be added before each UPC-E code.

UPC-E Leading 0 OFF



UPC-E Leading 0 ON



Scan the appropriate code below to select whether UPC-A codes are transmitted *with* or *without* the leading digit.

UPC-A Leading Digit OFF



UPC-A Leading Digit ON



Scan the appropriate code below to select whether UPC-E codes are expanded to the 12-digit, UPC-A format.

Expand to UPC-A OFF



Expand to UPC-A ON



Scan the appropriate code below to toggle ON/OFF full ASCII mode, which interprets character pairs as single characters.

Full ASCII OFF



Full ASCII ON



MISCELLANEOUS

MINIMUM SYMBOL LENGTH: You can specify the minimum number of characters for non-UPS-EAN barcodes. Scan the "Enter/Exit Programming" code, then the "Minimum Symbol Length" code. Use the "CODE BYTES" section of this guide to enter the 3-digit numeric code. Example: for a maximum symbol length of 13 digits, scan 0, 1, 3.

Enter/Exit Programming



Maximum Symbol Length



SYMBOL LENGTH LOCK: You can specify the exact number of characters for non-UPS-EAN barcodes. Scan the "Enter/Exit Programming" code, then the "Symbol Length Lock" code. Use the "CODE BYTES" section of this guide to enter the 3-digit numeric code. Example: for an exact symbol length of 13 digits, scan 0, 1, 3.

Enter/Exit Programming



Symbol Length Lock

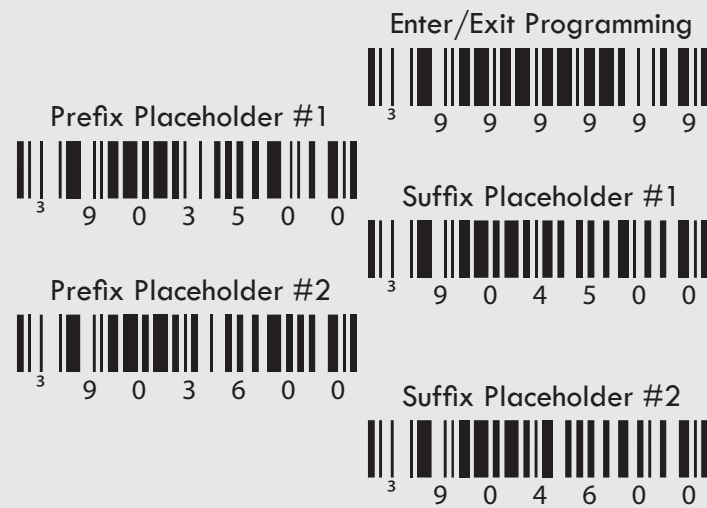


USER CONFIGURABLE PREFIX/SUFFIX

There are two prefix and two suffix placeholders that can be used to add characters to the data transmission. To add a character in any of these placeholders, first scan the "Enter/Exit Programming" code, then scan the appropriate placeholder scan. Use the "Code Bytes" to enter the 3-digit decimal code that corresponds to the character you want to add (refer to the ASCII conversion chart). When complete, again scan the "Enter/Exit Programming" code.

For example, if you want to add a pound sign (#) to the beginning of each scan, perform the following sequence:

1. Scan the "Enter/Exit Programming" code
2. Scan the "Prefix Placeholder #1" code
3. Scan the codes for 0, 3, 5 (the decimal code for "#" is 35)
4. Scan the "Enter/Exit Programming" code



CODE BYTES

The codes below are used to enter numeric values for various settings explained throughout this quickstart guide.



ASCII CONVERSION CHART

Use this chart to convert common characters to decimal (Dec) codes that can be entered into the scanner.

Dec	Hex	Char	Dec	Hex	Char	Dec	Hex	Char	Dec	Hex	Char	Dec	Hex	Char
000	00	NUL	026	1A	SUB	052	34	4	078	4E	N	104	68	h
001	01	SOH	027	1B	ESC	053	35	5	079	4F	O	105	69	i
002	02	STX	028	1C	FS	054	36	6	080	50	P	106	6A	j
003	03	ETX	029	1D	GS	055	37	7	081	51	Q	107	6B	k
004	04	EOT	030	1E	RS	056	38	8	082	52	R	108	6C	l
005	05	ENQ	031	1F	US	057	39	9	083	53	S	109	6D	m
006	06	ACK	032	20		058	3A	:	084	54	T	110	6E	n
007	07	BEL	033	21	!	059	3B	;	085	55	U	111	6F	o
008	08	BS	034	22	"	060	3C	<	086	56	V	112	70	p
009	09	HT	035	23	#	061	3D	=	087	57	W	113	71	q
010	0A	LF	036	24	\$	062	3E	>	088	58	X	114	72	r
011	0B	VT	037	25	%	063	3F	?	089	59	Y	115	73	s
012	0C	FF	038	26	&	064	40	@	090	5A	Z	116	74	t
013	0D	CR	039	27	'	065	41	A	091	5B	[117	75	u
014	0E	SO	040	28	(066	42	B	092	5C	\	118	76	v
015	0F	SI	041	29)	067	43	C	093	5D]	119	77	w
016	10	DLE	042	2A	*	068	44	D	094	5E	^	120	78	x
017	11	DC1	043	2B	+	069	45	E	095	5F	_	121	79	y
018	12	DC2	044	2C	,	070	46	F	096	60	'	122	7A	z
019	13	DC3	045	2D	-	071	47	G	097	61	a	123	7B	{
020	14	DC4	046	2E	.	072	48	H	098	62	b	124	7C	
021	15	NAK	047	2F	/	073	49	I	099	63	c	125	7D	}
022	16	SYN	048	30	0	074	4A	J	100	64	d	126	7E	~
023	17	ETB	049	31	1	075	4B	K	101	65	e	127	7F	
024	18	CAN	050	32	2	076	4C	L	102	66	f			
025	19	EM	051	33	3	077	4D	M	103	67	g			

PREVENTIVE MAINTENANCE

KEEPING YOUR SCANNER CLEAN

1. DISCONNECT THE SCANNER FROM THE COMPUTER/POWER SUPPLY!
2. Wearing latex (or similar) gloves, Use Isopropyl alcohol lightly applied to a microfiber towel to gently clean the housing and front plastic.

DO NOT use ammonia, soap, or acid-based cleaners as they can cause permanent damage to the unit.

COMPLIANCE STATEMENT

LASER SAFETY



This device has been tested in accordance with and complies with IEC60825-1 Ed 2.0.

CAUTION - Laser light. DO NOT STARE INTO BEAM.
CAUTION - Use of controls or adjustments or performance of procedures other than those specified herein may result in hazardous laser light exposure.

DISCLAIMER

POS-X reserves the right to make changes in specifications and other information contained in this document without prior notice, and the reader should in all cases consult POS-X to determine whether any such changes have been made. The information in this publication does not represent a commitment on the part of POS-X. POS-X shall not be liable for technical or editorial errors or omissions contained herein; nor for incidental or consequential damages resulting from the furnishing, performance, or use of this material. This document contains proprietary information that is protected by copyright. All rights are reserved. No part of this document may be photocopied, reproduced, or translated into another language without the prior written consent of seller.

© 2012 All rights reserved.

TECHNICAL ASSISTANCE

Customer Support Center

360.738.8433 | 800.790-8657 | support@pos-x.com

Corporate Headquarters

POS-X Inc.
 1975 Midway Lane Suite O
 Bellingham, WA 98226
 info@pos-x.com
 Tel: 360.738.8433
 Fax: 360.738.3495

Main URL

www.pos-x.com

LIMITED WARRANTY

Limited Warranty Length

3 years from date of purchase (please see Complete Terms and Conditions for limitations)

In the case that a product becomes defective, POS-X offers the choice of one of the following options:

2-Day Advance Exchange

To minimize downtime in the unlikely event of equipment difficulties, POS-X will ship a comparable replacement unit via 2-Day Shipping prior to receiving the defective unit.

Depot Repair

Ship the defective unit to POS-X and our trained technicians will repair the unit, usually with one-day turnaround time, then return the unit to you.

Complete Terms and Conditions

www.pos-x.com/warranty